

Don't try this unless you have a **Walk 'n' Roll** packer/roller



This is a WR90 Walk 'n' Roll Oscillator mounted on the rear of a 60,000lb. 16M Caterpillar Motor Grader. The unit is working in Alaska.

## Now You Can Compact Your Road While Turning a Corner With the Walk 'n' Roll Articulator



Manual lock-up when transporting or backing up is standard.  
Electric lock-up is available as an option.

(Can be retrofitted to any **Walk 'n' Roll** packer.)

Products are known for quality and innovative design. The standard provides our customers with high re-sale value.

Our manufacturers make continuous improvements in their products. We reserve the right to change specifications without notice. Photos and illustrations in this brochure may contain standard and optional equipment.

Products are distributed exclusively by:



LyCox Enterprises, Inc.  
6508 S. Frontage Rd., Billings, MT 59101  
406-294-1936, Toll Free: 866-865-1936  
[www.walknrollpackers.com](http://www.walknrollpackers.com)



YOUR AUTHORIZED DEALER



**Buy America! Hire America!**

**Walk 'n' Roll** packer/roller

**"King of the Grader Attached Compactors"**

The Series 3 Walk 'n' Roll packer/roller has Independent Walking Beams providing 100% coverage for maximum compaction with **NO ROLL OVER** of voids in the road base. Independent Walking Beams also creates a better kneading effect on the soil giving a more uniform surface compaction.

*One man can  
do the work of two,  
blade & compact  
the road in one operation!*



**THE RETRIEVER**

**"King of the Gravel Reclaimers"**

... An Investment that actually  
Saves you Time and Money



- Retrieve lost gravel back to road surface
- Fill pavement edge ruts and recycle support material
- Mulch roadside berm for lump-free spreading
- Reduces mowing - mulches growth below the surface
- Increase road safety - maintain a safe driving surface on shoulder
- Extend road life - removes berm to allow water run off
- Operates at 5 - 10 MPH
- Operator remains safely on road surface

**OUR PRODUCTS** are **BUILT WITH PRIDE** in the **USA**



DISTRIBUTED EXCLUSIVELY BY:

LyCox Enterprises, Inc. • 6508 S. Frontage Road • Billings, MT 59101  
Phone: 406-294-1936 • Toll Free 866-865-1936

[www.walknrollpackers.com](http://www.walknrollpackers.com)



# We build 8 Different Models of **Walk 'n' Roll** packer/rollers



The unit shown is a WR75 Straight Frame Walk 'n' Roll packer/roller.



The unit shown is a WR90 Twin Frame Oscillator Walk 'n' Roll packer/roller.



The unit shown is the WR90RL. This unit will Side-Shift 24" to the Right or Left.

We also build a WR75R and a WR90R Hydra-Slide. These units Side-Shift 36" to the Right

<b>WALK 'N' ROLL SPECIFICATIONS:</b>	<b>WR75-S</b>	<b>WR90-S</b>	<b>WR105-S</b>	<b>WR75-H</b>	<b>WR90-O</b>	<b>WR90-OH</b>	<b>WR90-H</b>	<b>WR105-H</b>
	STRAIGHT FRAME	STRAIGHT FRAME	STRAIGHT FRAME	STRAIGHT FRAME	OSCILLATOR	OSCILLATOR	HYD SIDESHIFT	HYD SIDESHIFT
Heavy Duty Independent Wakling Beams that pivot on 2" X 12" hardend steel pins with 5" of bushings.	FIVE	SIX	SEVEN	FIVE	SIX	SIX	SIX	SEVEN
Compaction Width	75"	90"	106"	75"	90"	90"	90"	105"
Easy Access 750 X 15 14ply smooth roller tires mounted on individual 6,000 lb hubs.	10	12	14	10	12	12	12	14
Heavy 12" X 6" Box Beam Frame with Hich Arch Gooseneck	YES	YES	YES	YES	YES	YES	YES	YES
Easy to reach frame mounted grease zerks	FIVE	SIX	SEVEN	FIVE	SIX	SIX	SIX	SEVEN
Self Contained Jack Stands	YES	YES	YES	YES	YES	YES	YES	YES
Two Heavy Duty Quick Attach Ripper Receivers or Quick Attach Brackets	YES	YES	YES	YES	YES	YES	YES	YES
Machine Weight	3000	34000	3800	3200	3500	3800	3600	4250
<b>Manufactured in the USA</b>	YES	YES	YES	YES	YES	YES	YES	YES
* Hydra-Slide Hydraulic Sideshift available on straight frame models					36" Right for large Motor Graders.	36" Right for large Motor Graders.	24" Right or Left or 36" Right	36" Right for large Motor Graders.
** Oscillator with twin box beam frame to follow the contour of the road.					Heavy 12" X 6" Twin Box Beam Frame	Heavy 12" X 6" Twin Box Beam Frame		

## OPTIONAL:

Heavy Duty Lift Assembly, in lieu of a rear ripper/	YES	YES	YES	YES	YES	YES	YES	YES
Pickup Tow Hitch	YES	YES	YES	YES	YES	YES	NO	NO
In Cab Pressure Gauge, manual or electric in cab activation.	YES	YES	YES	YES	YES	YES	YES	YES
Accumulator	YES	YES	YES	YES	YES	YES	YES	YES
Quick Attach	YES	YES	YES	YES	YES	YES	YES	YES
Articulator	YES	YES	YES	YES	YES	YES	YES	YES

## NO RIPPER? NO PROBLEM!

### Walk 'n' Roll Parallel Lift, Lift Assembly



The **Walk 'n' Roll** Heavy Duty Lift Assembly attaches to the motor grader like a factory rear ripper. It uses the same bolt pattern so there is no welding or holes to drill to mount the lift assembly. The lift assembly requires an extra valve and hydraulics to the rear of the motor grader. Parallel lift raises and lowers the front and rear tires simultaneously assuring equal pressure on all of the tires.

The Accumulator and Quick-Attach are standard on the **Walk 'n' Roll** Lift Assembly. The Quick-Attach allows easy on – easy off of the grader. It's a one man operation.



Quick-Attach



Ripper Receiver

The Quick-Attach is optional for ripper mounted packers. The Quick-Attach brackets are mounted on the **Walk 'n' Roll** packer and the ripper receivers are loose and can be manually placed in the ripper pocket.

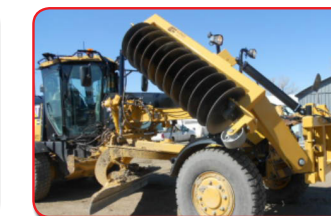
See the **Walk 'n' Roll** video on our website  
[www.walknrollpackers.com](http://www.walknrollpackers.com)  
 You will see the WR75 in Action



## THE RETRIEVER

"King of the Gravel Reclaimers"

... An Investment that actually Saves you Time and Money



### Front-Mount System

- Connects with a quick hitch to an existing front lift group
- Operator is working in driving direction
- Depth control

### Wing-Mount Retriever

- Mounts to existing side Grader snow wing
- Greater stability on Grader & reaches further out
- Depth control

### Tractor-Mount Retriever

- Mounts to any 3pt hitch (lower 2 arms only)
- Rear wheel on carrying frame, no stress on 3pt
- Depth control on carrying frame
- Gang floats independent of tractor, which enables gang to follow contour of surface

### RETRIEVER SPECIFICATIONS

	GRADER MOUNT (QUICK HITCH)	GRADER (WING MOUNT)	*TRACTOR MOUNT
FRAME	5" X 5" X 5/16"	5" X 5" X 5/16"	5" X 5" X 5/16"
GANG SHAFT	2 1/4" #1045	2 1/4" #1045	2 1/4" #1045
24" DISCS	ELEVEN	ELEVEN	ELEVEN
22" DISCS	ONE	ONE	ONE
DISC SPACING	6" BETWEEN DISCS	6" BETWEEN DISCS	6" BETWEEN DISCS
BEARINGS	2-4 BOLT PILLOW BLOCK TIMKEN DUAL RACED TAPERED ROLLER BEARINGS	2-4 BOLT PILLOW BLOCK TIMKEN DUAL RACED TAPERED ROLLER BEARINGS	2-4 BOLT PILLOW BLOCK TIMKEN DUAL RACED TAPERED ROLLER BEARINGS
DISC ANGLE	25 DEGREES FROM DIRECTION OF TRAVEL	25 DEGREES FROM DIRECTION OF TRAVEL	25 DEGREES FROM DIRECTION OF TRAVEL
CONNECT	PARALLEL FRONT MOUNT LIFT SYSTEM (BALDERSON, FALLS, ETC.)	CONNECT TO EXISTING WING POST	3 POINT TRACTOR MOUNT
WEIGHT	2500LBS.	1500 LBS	2000

\* REAR CARRYING WHEEL W/ SWIVEL BRAKE



THE RETRIEVERS ARE  
**"BUILT WITH PRIDE IN THE USA"**